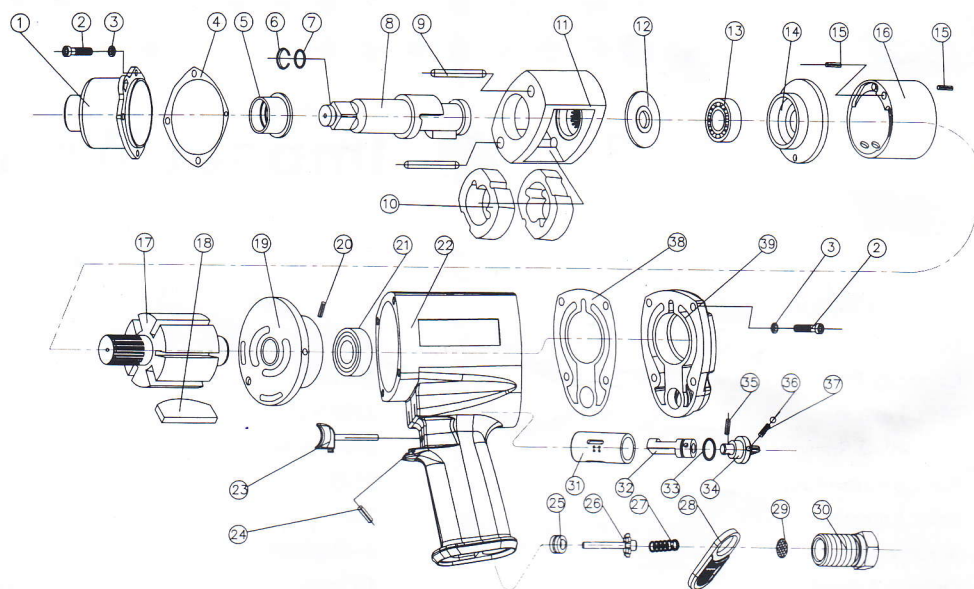
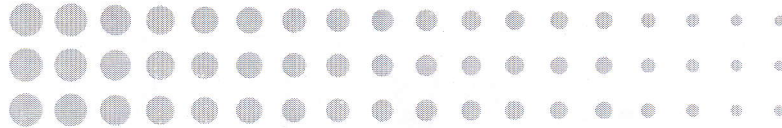
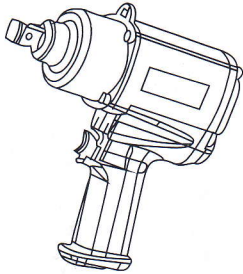


EXPLODED VIEW



PARTS LIST

pos	description	q' ty	pos	description	q' ty
1	hammer case assembly	1	22	housing	1
2	screw	8	23	trigger	1
3	spring washer	8	24	elastic cylindrical pin	1
4	hammer case gasket	1	25	throttle valve seat	1
5	bushing	1	26	valve stem	1
6	retainer ring	1	27	spring	1
7	o-ring	1	28	exhaust board	1
8	anvil	1	29	filter	1
9	hammer pin	2	30	air inlet	1
10	hammer	2	31	reverse valve bushing	1
11	hammer frame	1	32	reverse valve	1
12	rear washer	1	33	o-ring	1
13	front bearing	1	34	knob	1
14	front end plate	1	35	elastic cylindrical pin	1
15	elastic cylindrical pin	2	36	steel ball	1
16	cylinder	1	37	spring	1
17	rotor	1	38	back cover gasket	1
18	rotor blade	6	39	back cover	1
19	rear end plate	1			
20	elastic cylindrical pin	1			
21	rear bearing	1			



3/4" Air Impact Wrench

1) Technical Datum

Drive Size	3/4"
Capacity Bolt Dia.	M21mm
Max Torque	1300N.m
Free-load Speed	5000r.p.m
Air Consumption	3L/S
Inlet Adapter	3/8"
Air Pressure	6-8kg/cm ²
Overall Length	192mm
Weight	5.1kg
Hose Size	9.5mm

2) Application

The tool is pneumatic wrench with the characteristics of large power, high efficiency, various application. It is widely suitable for installing the motorcycle, cars, generator. It is also very useful for car mending factory, tire shop and so on.

3) Features

All the parts are processed by precious machine tool. the dimension of process face is very precious. All the material of impact structure is high quality steel, the heat treatment system extend the service life, so it can stand large impact and wearing.

The tool with the ingenious structure, which make the operator feel comfortable and reduce the tire sense largely.

4) Operations and Maintenances

- The moisture of the air compressor and gas storage cylinder must be cleaned thoroughly, air supply pipe is not allowed to leak gas.
- Check the air pressure meter whether the pressure is 8 kg, the safe working pressure is within the range of 6.3 kg.
- Make sure the tool can normally operate, please install the filter and automatic lubricator on the outlet of the air compressor.
- Without lubricator, please keep the air inlet mouth full of lubrication grease before and after working, which can reach the best performance (please use the professional grease of the air wrench).
- When the tool can not work, please insert the lubrication grease which can make it turn. If always can not remove the obstacle, please contact with the dealer.