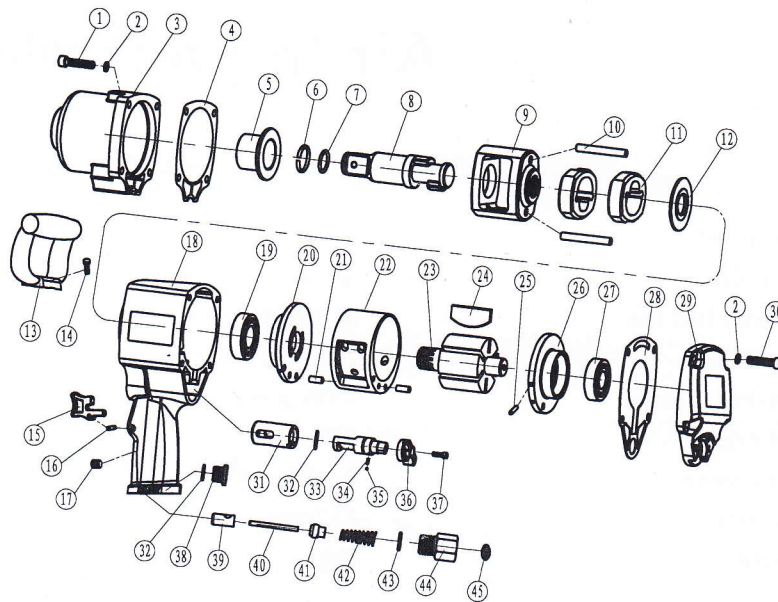
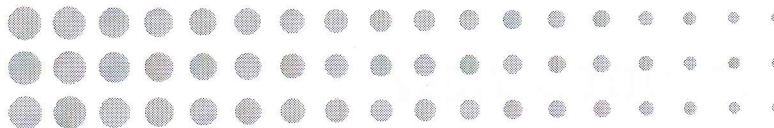
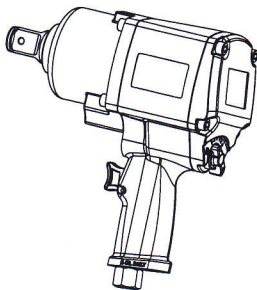


EXPLODED VIEW



PARTS LIST

pos	description	q'ty	pos	description	q'ty
1	screw	4	24	rotor blade	6
2	spring washer	8	25	end plate pin	1
3	hammer case	1	26	rear end plate	1
4	hammer case gasket	1	27	rear bearing	1
5	bushing	1	28	rear cover gasket	1
6	anvil ring	1	29	rear cover	1
7	O-ring	1	30	screw	4
8	anvil	1	31	reverse valve bushing	1
9	hammer frame	1	32	O-ring	2
10	hammer pin	2	33	reverse valve	1
11	hammer	2	34	spring	1
12	hammer cage washer	1	35	steel ball	1
13	handle	1	36	knob	1
14	screw	2	37	screw	1
15	trigger	1	38	aluminium block	1
16	trigger pin	1	39	throttle valve seat	1
17	screw	1	40	air inlet pin	1
18	housing	1	41	air closer	1
19	front bearing	1	42	airinlet spring	1
20	front end plate	1	43	O-ring	1
21	cylinder pin	2	44	air inlet	1
22	cylinder	1	45	filter	1
23	rotor	1			



Air Impact Wrench

1) Technical Data:

Drive Size	3/4" / 1"
Capacity Bolt Dia	M36mm
Max Torque	2000N.m
Free-load Speed	4300r.p.m
Inlet Adapter	1/2"
Air pressure	6-10kg/cm ²
Hose Size	12.7mm
Weight	8kg

2) Application

The tool is pneumatic wrench with the characteristics of large power, high efficiency, various application. Suitable for screw and unscrew work of big truck and lorry. Also can be used in the maintenance of bus and general Equipments of large machines.

3) Features

All the parts are processed by previous machine tool. The dimension of process face is very precious. All the material of impact structure is high quality steel.

The heat treatment system extend the service life. So it can stand large impact and wearing. The tools with the ingenious structure, which make the operator feel comfortable and reduce the tire sense largely.

4) Operations and Maintenances

- The moisture of the air compressor and gas storage cylinder must be cleaned thoroughly. Air supply pipe is not allowed to leak gas.
- Check the air pressure meter whether the pressure is 8kgs. The safe working pressure is within the range of 6.3kgs.
- Make sure the tool can normally operate, please install the filter and automatic lubricator on the outlet of the air compressor.
- Without lubricator, Please keep the air inlet mouth full of lubrication grease before and after working, which can reach the best performance (please use the professional grease of the air wrench).
- When the tool can not work, please insert the lubrication grease which can make it turn. If always can not remove the obstacle, please contact with the dealer.