

PNEUMATIC WRENCH

1) Technical Datum

Drive Size	1"
Capacity Bolt Dia.	M65
Max Torque	4800Nm
Free-load Speed	3200rpm
Inlet Adapter	1/2"
Air Pressure	8-12kg/cm ²
Hose Size	12.7mm
weight	21kgs

2) Application

The tool is pneumatic wrench with the characteristics of large power, high efficiency, various application. It is widely suitable for installing the motorcycle, cars, generator. It is also very useful for car mending factory, tire shop and so on.

3) Features

All the parts are processed by precious machine tool. the dimension of process face is very precious. All the material of impact structure is high quality steel, the heat treatment system extend the service life, so it can stand large impact and wearing.

The tool with the ingenious structure, which make the operator feel comfortable and reduce the tire sense largely.

4) Operations and Maintenances

a) The moisture of the air compressor and gas storage cylinder must be cleaned thoroughly, air supply pipe is not allowed to leak gas.

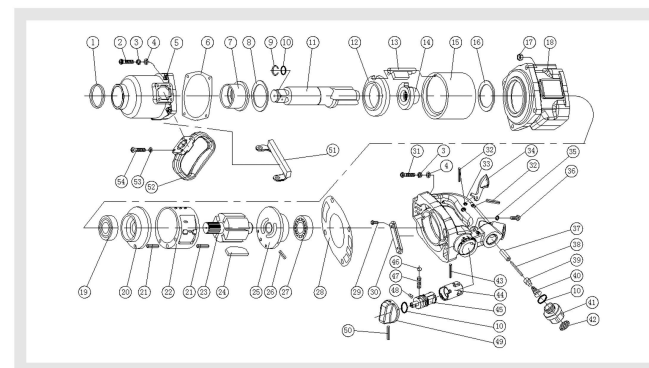
b) Check the air pressure meter whether the pressure is 8 kg, the safe working pressure is within the range of 6.3 kg.

c) Make sure the tool can normally operate, please install the filter and automatic lubricator on the outlet of the air compressor.

d) Without lubricator, please keep the air inlet mouth full of lubrication grease before and after working, which can reach the best performance (please use the professional grease of the air wrench).

e) When the tool can not work, please insert the lubrication grease which can make it turn. If always can not remove the obstacle, please contact with the dealer.

EXPLODED VIEW



PARTS LIST

pos	description	q' ty	pos	description	q' ty
1	oil seal	1	28	rear cover gasket	1
2	screw	4	29	screw	1
3	spring washer	8	30	rear cover protector	1
4	washer	8	31	screw	4
5	front motor housing	1	32	trigger pin	2
6	hammer case gasket	1	33	rear cover	1
7	bushing	1	34	trigger	1
8	anvil washer	1	35	O-ring	1
9	anvil ring	1	36	screw	1
10	O-ring	3	37	air inlet bushing	1
11	anvil	1	38	air inlet pin	1
12	hammer pin	1	39	air closer	1
13	hammer	1	40	spring	1
14	hammer cage	1	41	air inlet	1
15	hammer frame	1	42	filter	1
16	rear washer	1	43	reverse valve pin	1
17	screw nut	4	44	reverse valve bushing	1
18	housing	1	45	reverse knob	1
19	front bearing	1	46	steel ball	1
20	front end plate	1	47	valve spring	1
21	cylinder pin	2	48	knob limit pin	1
22	cylinder	1	49	reverse valve knob	1
23	rotor	1	50	knob pin	1
24	rotor blade	6	51	housing protector	1
25	rear end plate	1	52	handle	1
26	end plate pin	1	53	spring washer	4
27	rear bearing	1	54	screw	4