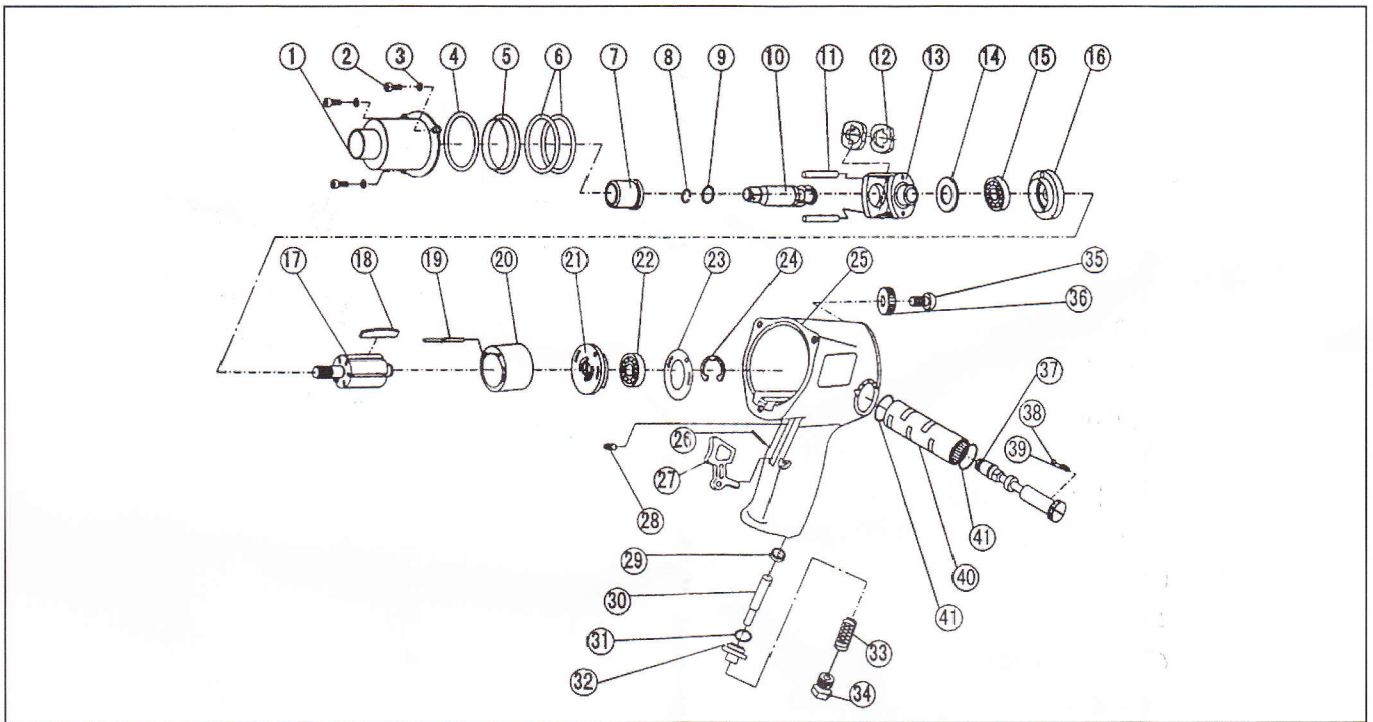
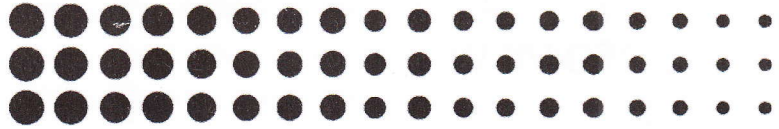
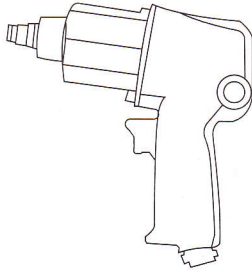


EXPLODED VIEW



PARTS LIST

Pos	Description	Q'ty	Pos	Description	Q'ty
1	Hammer case assembly	1	22	Ball bearing	1
2	Screw	3	23	Rear end plate gasket	1
3	Spring washer	3	24	Rotor bearing retainer	1
4	Hammer case gasket	1	25	Housing incl.part37,41	1
5	Hammer case pilot	1	26	Spring pin	1
6	Motor clamp washer	2	27	Trigger	1
7	Bushing	1	28	Set screw	1
8	Reainer ring	1	29	Throttle valve seat	1
9	O-ring	1	30	Vavle stem	1
10	Anvil	1	31	O-ring	1
11	Hammer pin	2	32	Air valve	1
12	Hammer	2	33	Spring	1
13	Hmmer frame	1	34	Air inlet	1
14	Rear washer	1	35	Reverse valve knob screw	1
15	Ball bearing	1	36	Reverse valve knob	1
16	Front end plate	1	37	Reverse valve	1
17	Rotor	1	38	Steel ball	1
18	Rotor blade	6	39	Spring	1
19	Lock pin	1	40	Reverse valve bushing	1
20	Cylinder	1	41	O-ring	2
21	Rear end plate	1			



1/2" Air Impact WRENCH

1) Technical Datum

Drive Size	1/2"
Capacity	M16mm
Max Torque	640N.m
Free-load Speed	7500R.p.m
Air Consumption	17L/S
Inlet Adapter	1/4"
Air Pressure	6-8kg/cm ²
Overall Length	192mm
Weight	2.75kg
Hose size	9.5mm

2) Application

The tool is pneumatic wrench with the characteristics of large power, high efficiency, various application. It is widely suitable for installing the motorcycle, cars, generator. It is also very useful for car mending factory, tire shop and so on.

3) Features

All the parts are processed by precious machine tool. the dimension of process face is very precious。 All the material of impact structure is high quality steel, the heat treatment system extend the service life, So it can stand large impact and wearing.

The tool With the ingenious structure. which make the operator feel comfortable and reduce the tire sense largely.

4) Operations and Maintenances

a) The moisture of the air compressor and gas storage cylinder must be cleaned thoroughly, air supply pipe is not allowed to leak gas.

b) Check the air pressure meter whether the pressure is 8 kg, the safe working pressure is within the range of 6.3kg.

c) Make sure the tool can normally operate, please install the filer and automatic lubricator on the outlet of the air compressor.

d) Without lubricator, please keep the air inlet mouth full of lubrication grease before and after working, Which can reach the best performance(please use the professional grease of the air wrench).

e) when the tool can't work,please insert the lubrication grease which can make it turn. If always can't remove the obstacle. please contact with the dealer.